

EMFA
crafting light

Where design, manufacturing,
electronics and material expertise
meet to create light.



crafting light

Mission

EMFA crafts high quality architectural lighting fixtures fulfilling the needs of architects, lighting designers, and electrical engineers.

EMFA distinguishes itself by providing personal customer service and lifetime assistance as well as the ability to customize products according to specific customer needs.

Standards

EMFA produces to European standards.

EMFA's fixtures incorporate first class components typically produced by western European and American companies.

EMFA products are used in high profile projects around the UK and Western Europe, but often sold under well recognized European brands.

In recent years EMFA is moving from private label manufacturing to branding its own products.

Advantage

The quality, function and design all conform to European norms but with a substantial price advantage.

EMFA has been using LEDs since 1996 and has manufacturing experience for over 50 years. EMFA has lived all the positive and negative experiences of the new and ever-changing technology, LED.

When a customer is looking for reliability with highest technological standards, EMFA is the right choice.

Our experienced in-house production and possibility for small batch adaptations allows EMFA to give its customers an industry-wide, incomparable flexibility with surprisingly short lead times.





emfa heritage

1922

EMFA's first generation of lighting producers; Andon Kasapoglu, is awarded his electrician's license

1927

Andon establishes his own electrician business

1940

Andon establishes Bakalit, a trading and electricians' shop in central Istanbul. He becomes the pioneer of importing Bakalite to Turkey and begins the production of electrical components for home and industry

1959

Andon Kasapoglu founds EMFA and builds a factory not far from his shop in Istanbul to produce sockets, switches, plugs, buttons, and other electrical components

1975

EMFA's 2nd generation of lighting producers, Rokos Kasapoglu, joins EMFA

1976

EMFA produces its first lighting fixture

1979

EMFA expands and invests in aluminum die-casting machines.

General manager, Haydar Demil, joins EMFA

1980

EMFA becomes accredited by the Turkish Standard Institute (TSE) producing in line with European and Turkish Standards and starts exporting to Europe

1984

EMFA shifts its focus on producing light fixtures

1990

EMFA expands and invests in an electrostatic painting facility and drying oven allowing for many different finishing colors

1993

Chief engineer, Serdar Akmansayar, and national sales manager, Recep Cayiroglu, join EMFA



1994
EMFA exhibits at Hanover Fair and exports to Middle East and Balkans

1996
First EMFA LED fixture is produced

2000
EMFA exhibits at the Light+Building Fair in Frankfurt for the first time

2004
Marketing manager Johannes Puhner, joins EMFA

2005
EMFA invests in CNC machining technology to accommodate small batch adaptations

2009
50th anniversary! EMFA now exports to more than 40 countries worldwide

2010
EMFA is awarded the ISO 9001 certificate

2012
EMFA's 3rd generation of lighting producers, Adnan Kasapoglu, joins EMFA

2013
EMFA builds a photometric laboratory to generate IES and Elumdat files of their fixtures

EMFA becomes sponsoring partner at Professional Lighting Design Convention (PLDC) in Copenhagen.



sustainability

EMFA does its best at employing sustainable business practices within the three traditional pillars of sustainability: environmental, social, and economic, as well as in the newly defined pillar; cultural sustainability.

Social

Being a family-run business, EMFA has always put importance on the social wellbeing of its team.

Today, some of the employees or their parents were around when the company was founded in 1959.

Cultural

In respect to the ancient civilizations that once inhabited Turkey, EMFA has named most of its product ranges after ancient cities and towns.

"The light of the ancient civilizations shine upon the world today through EMFA."

Environmental

In 1996 EMFA began using LEDs in their production of light fixtures. Initially, when LEDs were only available in low power, they were the perfect choice to use in highlighting stairs and paths in low light areas.

Since then, LEDs have become more and more powerful and efficient, to the point that today EMFA can light an entire skyscraper (Spine Tower), with LEDs resulting in lower power consumption and maintenance costs compared to traditional light sources.

Economic

For nearly 6 decades and three generations, EMFA has successfully been a profitable business. Over the decades the management has made decisions aimed to give EMFA long-term results. One key factor has been to invest greatly in R&D to stay on top of the most modern technologies. EMFA has been using LEDs for nearly 20 years.

premium quality

Design

To support EMFA's mission to become a global player in the lighting industry the company has teamed up with hsd+ for the re-branding of the entire visual communication.

EMFA's partnership with the dynamic, international design-duo hagmüllersuchomel design + (hsd+) will elevate the quality of all new products and clearly communicate EMFA's vision, product quality and customer service.

Digital design and prototyping tools combined with extensive manufacturing experience and in-house production ensure that all products meet the high demands of EMFA customers.

Certifications

EMFA products are manufactured and certified after the European standards: EN 60598-1 EN 60598-2-1 EN 60598-2-2 EN 60598-2-5 EN 60598-2-18

EMFA production follows the quality management systems of: ISO 9001:2008

Engineering

"Form follows function." EMFA fixtures are engineered first and foremost taking function into account.

Especially in regards to LED fixtures this principle is important. If you install an LED into a fixture that has been developed for a fluorescent or halogen lamp, the basic requirements an LED needs might not be met, leading to a shortened lifetime. This is especially crucial with high IP-rated fixtures where the intense heat the LED produces can only dissipate through the metals the LED is in direct contact with.

Given that a major market for EMFA is the Middle East, all fixtures are designed to withstand ambient temperatures of 50°C. The LEDs are mounted on metal core pcbs, which are mounted to the aluminium body of the fixture so that the entire fixture acts as a heat sink.

Extensive testing is performed in EMFA's laboratory to ensure these values are maintained so that the lifetime of the LED is not compromised.

Production

To ensure consistent quality of its products, EMFA produces by the standards set out by ISO 9001. This is done however without compromising flexibility and the ability for small-batch adaptations. EMFA produces over 4000 items, having nearly all component production in house allows EMFA to make minor modifications to these products even in small batches.

Customisation

"Customisation is EMFA's standard."

EMFA offers many combinations for each fixture, as all fixtures are made in house. A combination of 6 standard paint colors, 3 stainless steel finishes, 8 LED colors, 2 wattages, and 5 or more lenses and reflectors are available to make the fixture suitable for the required application.

This is done without increasing lead-time and is available for large as well as small quantities.

departments

Facilities

EMFA operates in a factory of 5.000 square meters with approximately 80 employees.

Having the following

departments on site enables EMFA to customize products according to customers' needs and have short lead times for delivery of large as well as small quantities.

Departments

- product design
- research & development
- engineering
- mold manufacturing
- thermoset material preparation
- thermoset pressing
- aluminium die-cast injection
- mechanical processing
- metal forming & pressing
- cnc milling
- painting & surface treatment
- electronics
- assembly
- packaging
- test lab
- quality managment
- photometric lab



reference projects

Global & Local

EMFA exports to over 40 countries and has supplied such prestigious projects as:

Zorlu Center	Istanbul
Palmarina	Bodrum
Mall of Istanbul	Istanbul
Spine Tower	Istanbul
Port Alacati Marina	Izmir
JW Marriot Marquis Hotel	Dubai
Macau Fire Station	Macau
JW Marriot Absheron Hotel	Baku
Jeju Global Education City	Jeju Island
University of West England	Bristol
Borders Campus	Edinburgh
Presidential Residences	Istanbul
Bath University	Bath
Porto Cupecoy Marina	St. Maarten
Aviva Arena Stadium	Dublin
Sheikh Rashid Al Maktoum's Villa	Seychelles
Literature Museum of Azerbaijan	Baku
Bademlik Mosque	Istanbul
Four Season's Hotel Bosphorus	Istanbul
Art Academy	Baku
Hotel Johann Strauss	Vienna
Radisson Blue Hotel	Cesme



PRODUCT INDEX

Drive Over



Knidos
p 2-9



Knidos Cool Glass
p 10-11



Santos
p 12-23



Teos
p 24-25



Mira 1
p 26-28



Mira 2
p 29-32



Assos 2
p 33-35



Assos 3
p 37-39



Assos 4
p 41-46



Assos 6
p 47-53

Walk Over



Assos 6
p 56-60



Milet 2
p 61-65



Milet 4
p 66



Belkis 1
p 67-69



Belkis 1 Asym
p 70-71



Belkis 2
p 74-76



Belkis 2 Asym
p 77-85



Belkis 3
p 87-88



Belkis 3 Asym
p 89-92



Belkis 4
p 93-94



Belkis 5
p 95-98



Belkis 5 Asym
p 99-106



Patnos 1
p 109-111



Patnos 1 Asym
p 112-113



Patnos 2
p 114-117



Patnos 2 Asym
p 118-126



Patnos 3
p 127-128



Patnos 3 Asym
p 129-133



Patnos 4
p 133



Patnos 5
p 134-136



Patnos 5 Asym
p 137-142



Gordion 1
p 144



Gordion 2
p 145



Gordion 2 Asym
p 146



Gordion 3
p 149



Gordion 3 Asym
p 150



Gordion 4
p 153



Gordion 5
p 154



Gordion 5 Asym
p 155

Wall Recessed



Santos 6
p 158-159



Milet 1
p 161



Milet 2
p 162



Milet 3
p 163



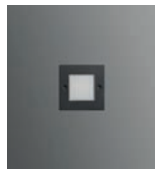
Milet 4
p 164



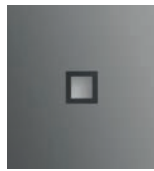
Belkis 1 LLA
p 165

PRODUCT INDEX

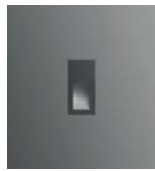
Surface Mount



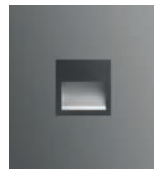
Belkis 1 LLS
p 166



Bergama 101
p 167



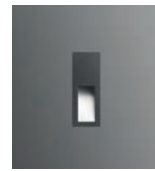
Bergama 102
p 169



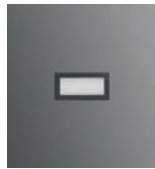
Bergama 103
p 170



Bergama 104
p 171



Bergama 105
p 172



Bergama 106
p 173



Dyo
p 174



Pyramid
p 176



Slim Pyramid
p 178



Side
p 179



Perge
p 180



Knidos
p 182



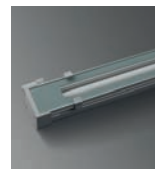
Mira 1
p 183-185



Mira 2
p 186-187



Karia 1
p 188-190



Karia 2
p 191-193



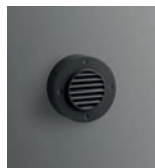
Slim Pyramid
p 194



Side
p 195



Perge
p 196



Milet
p 197-199



Belkis 1 LLA
p 200



Belkis 1 LLS
p 201



Belkis Appliques
p 202-210



Belkis 1 Appliques
p 211



Belkis Torch
p 212



Saturn Appliques
p 213-214

Spots



Belkis 1
p 216-224



Belkis 2
p 225-238



Belkis 3
p 239-246



Belkis 4
p 247-253



Belkis 5
p 254-268

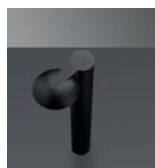


Belkis 6
p 270



Respot
p 272

Bollards



Odeon
p 275-276



Dion 1
p 277



Dion 2
p 279



Dion 3
p 280



Dion 4
p 282



Dion 5
p 283

PRODUCT INDEX



Atlantis Bollard
p 284-285



Milet
p 286



Bella
p 287



Polaris
p 289-290



Rambo
p 291



Belkis 5
p 292



Lara
p 294



Bow
p 296



Mashroom
p 296

Underwater



Atlantis 1
p 298-299



Atlantis 2
p 300-301



Atlantis 5
p 302-303



Atlantis 27
p 304-307



Atlantis 1
p 308



Atlantis 2
p 309-310



Atlantis 5
p 311-312



Atlantis 27
p 313



Atlantis 1
p 314



Atlantis 2
p 315-316



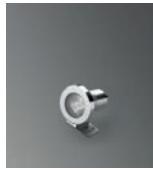
Atlantis 5
p 317-318



Atlantis 27
p 319



Inox 1
p 320



Inox 1
p 321



Mira Atlantis 1
p 322-323



Mira Atlantis 1
p 324-325



Mira Atlantis 2
p 326-328



Mira Atlantis 2
p 329-330



Assos
p 331

Near Water



Atlantis 1
p 334-335



Atlantis 2
p 336-337



Atlantis 5
p 338-339



Atlantis 27
p 340



Atlantis 1
p 341



Atlantis 2
p 342-343



Atlantis 5
p 344-345



Atlantis 27
p 346



Atlantis 1
p 347-348



Atlantis 2
p 349-352



Atlantis 3
p 353



Atlantis 4
p 354

PRODUCT INDEX



Atlantis 5
p 355-356



Atlantis 27
p 357



Atlantis 5
p 358-359



Atlantis 27
p 360

Downlights



Marathon 2
p 362-363



Marathon 3
p 364



Marathon 4
p 365



Marathon 2 Glass
p 366-369



Decathlon 2
p 371



Decathlon 3
p 372-373



Decathlon 4
p 374-375



Triathlon 3
p 376-377



Triathlon 4
p 378



Triathlon 5
p 379



Triathlon 3
p 380-381



Triathlon 4
p 382



Triathlon 5
p 383



Belkis 1
p 384



Belkis 2
p 385



Belkis 5
p 386



Dyo
p 388



Cunda / Patara
p 389



Halogen
p 390



Marathon 2 Glass
p 391-392



Belkis
p 393



Belkis
p 394



Bergama
p 395-396



Belkis 1
p 398

Pendants



Saturn
p 400



Elea
p 401



Troy
p 404

Pole Fixtures



Belkis 5
p 406